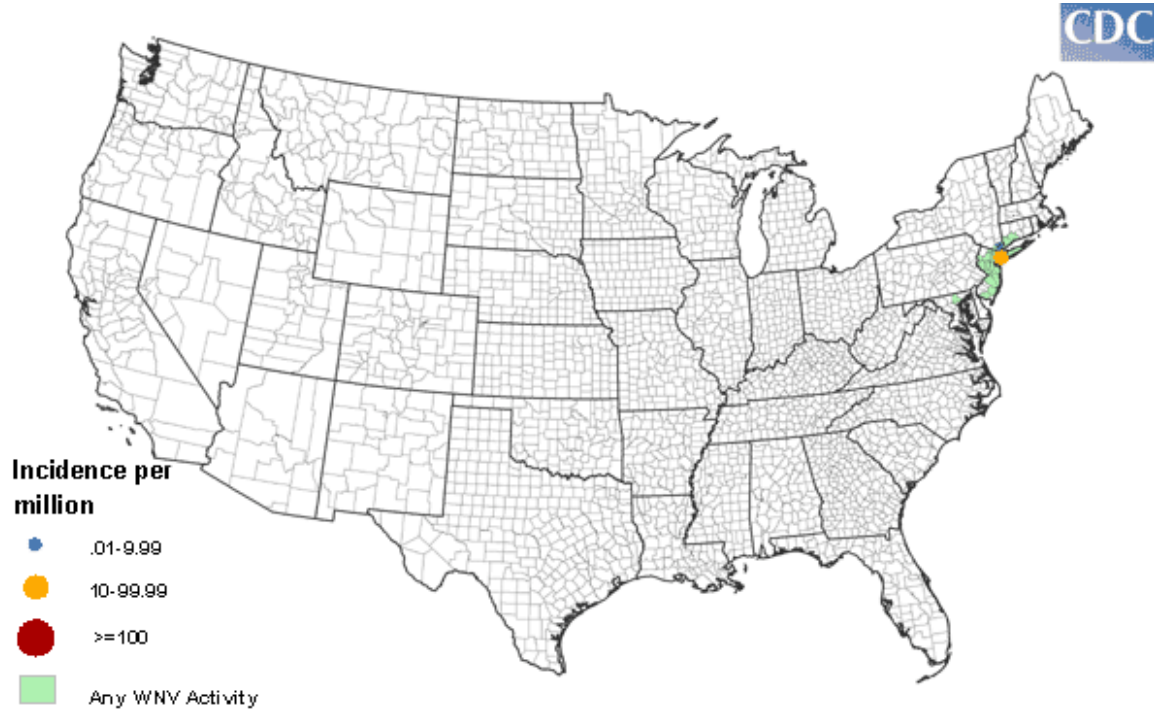


Close Window

## Final 1999 West Nile Virus Human Neuroinvasive Disease Incidence in the United States

This map reflects surveillance findings occurring January 1, 1999 through December 31, 1999 as reported to CDC's ArboNET system for public distribution by state and local health departments.



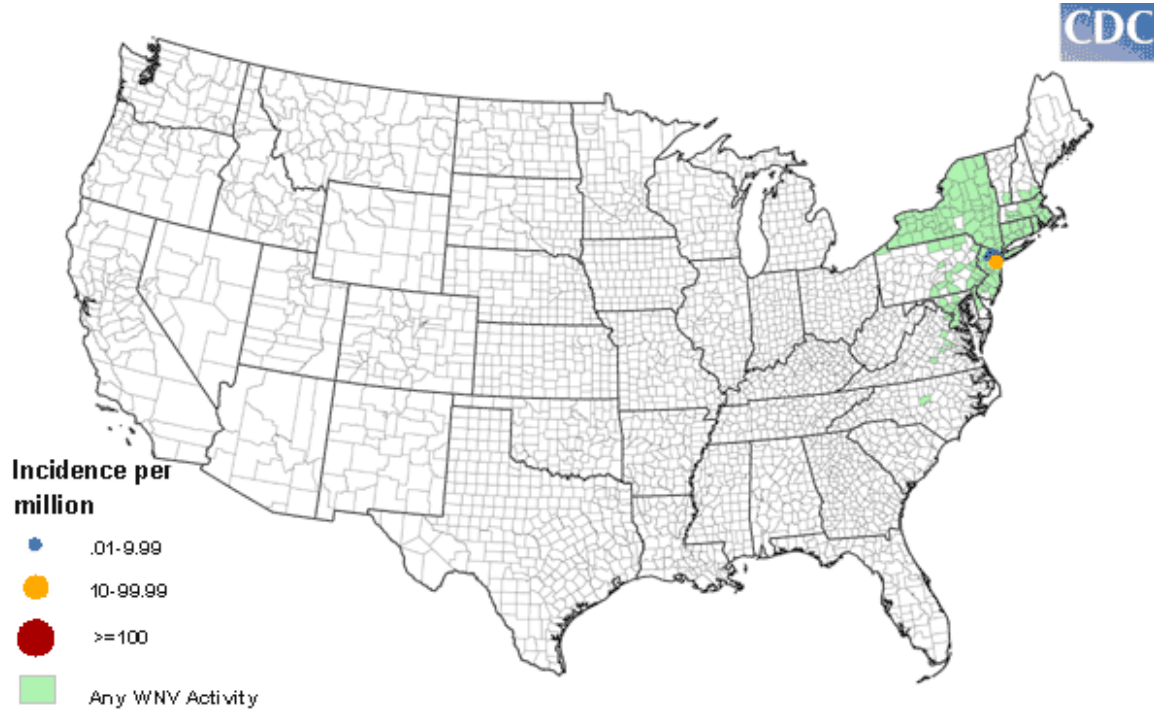
West Nile virus maps reflect surveillance reports released by state and local health departments to CDC's ArboNET system for public distribution. Map shows the distribution of human neuroinvasive disease (encephalitis and/or meningitis) incidence occurring during 1999 with number of human cases shaded according to incidences ranging from .01 to 9.99, 10 to 99.99, greater than 100, and WNV activity (human, mosquito, veterinary, avian and sentinel data).

Maps detailing county-level human, mosquito, veterinary, avian and sentinel data are published each week on the collaborative USGS/CDC West Nile virus web site: <http://diseasemaps.usgs.gov/>

Close Window

## Final 2000 West Nile Virus Human Neuroinvasive Disease Incidence in the United States

This map reflects surveillance findings occurring January 1, 2000 through December 31, 2000 as reported to CDC's ArboNET system for public distribution by state and local health departments.



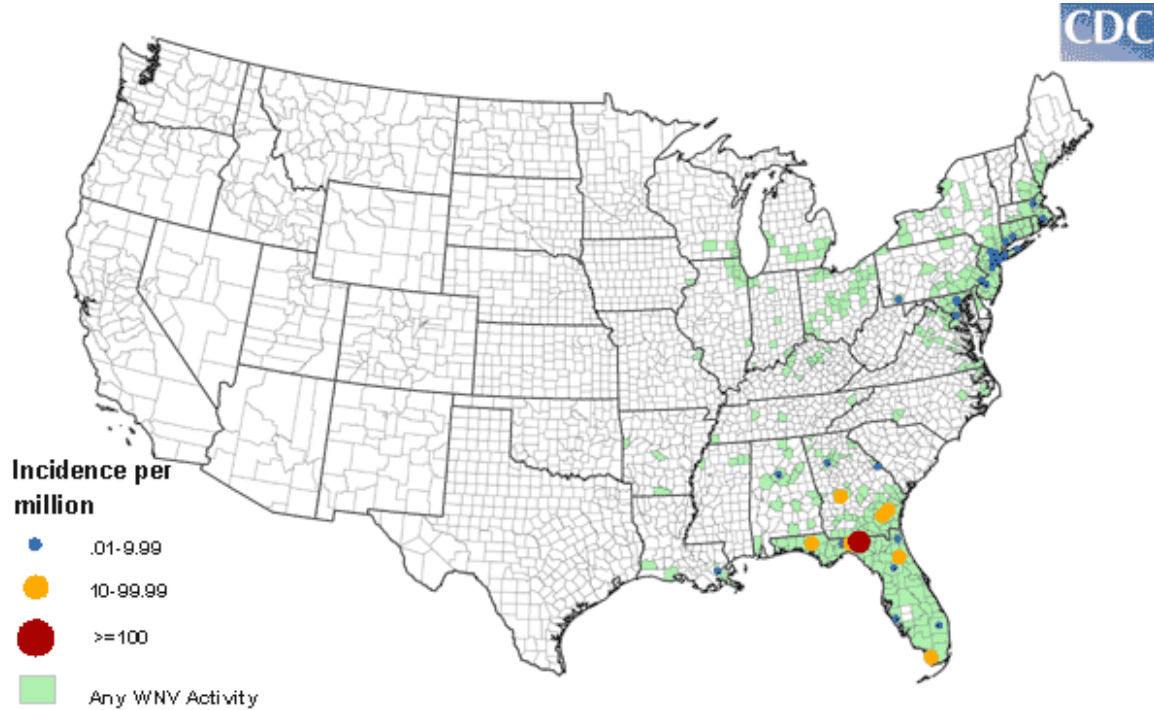
West Nile virus maps reflect surveillance reports released by state and local health departments to CDC's ArboNET system for public distribution. Map shows the distribution of human neuroinvasive disease (encephalitis and/or meningitis) incidence occurring during 2000 with number of human cases shaded according to incidences ranging from .01 to 9.99, 10 to 99.99, greater than 100, and WNV activity (human, mosquito, veterinary, avian and sentinel data).

Maps detailing county-level human, mosquito, veterinary, avian and sentinel data are published each week on the collaborative USGS/CDC West Nile virus web site: <http://diseasemaps.usgs.gov/>

Close Window

## Final 2001 West Nile Virus Human Neuroinvasive Disease Incidence in the United States

This map reflects surveillance findings occurring January 1, 2001 through December 31, 2001 as reported to CDC's ArboNET system for public distribution by state and local health departments.



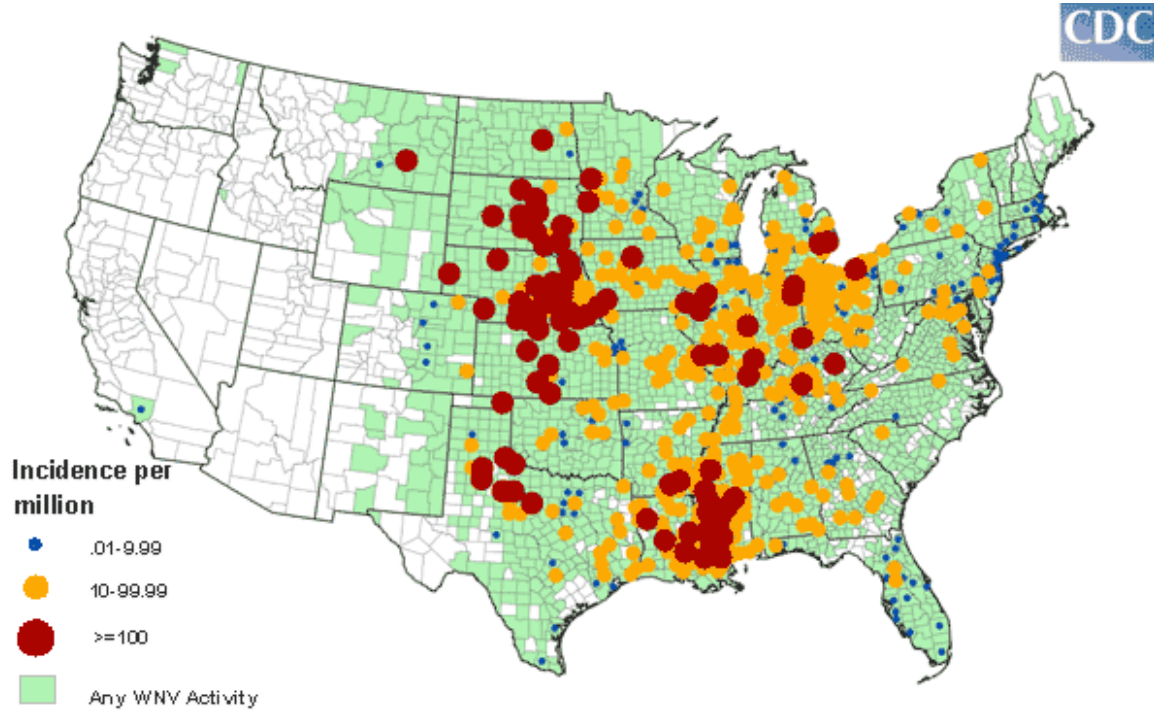
West Nile virus maps reflect surveillance reports released by state and local health departments to CDC's ArboNET system for public distribution. Map shows the distribution of human neuroinvasive disease (encephalitis and/or meningitis) incidence occurring during 2001 with number of human cases shaded according to incidences ranging from .01 to 9.99, 10 to 99.99, greater than 100, and WNV activity (human, mosquito, veterinary, avian and sentinel data).

Maps detailing county-level human, mosquito, veterinary, avian and sentinel data are published each week on the collaborative USGS/CDC West Nile virus web site: <http://diseasemaps.usgs.gov/>

Close Window

## Final 2002 West Nile Virus Human Neuroinvasive Disease Incidence in the United States

This map reflects surveillance findings occurring January 1, 2002 through December 31, 2002 as reported to CDC's ArboNET system for public distribution by state and local health departments.



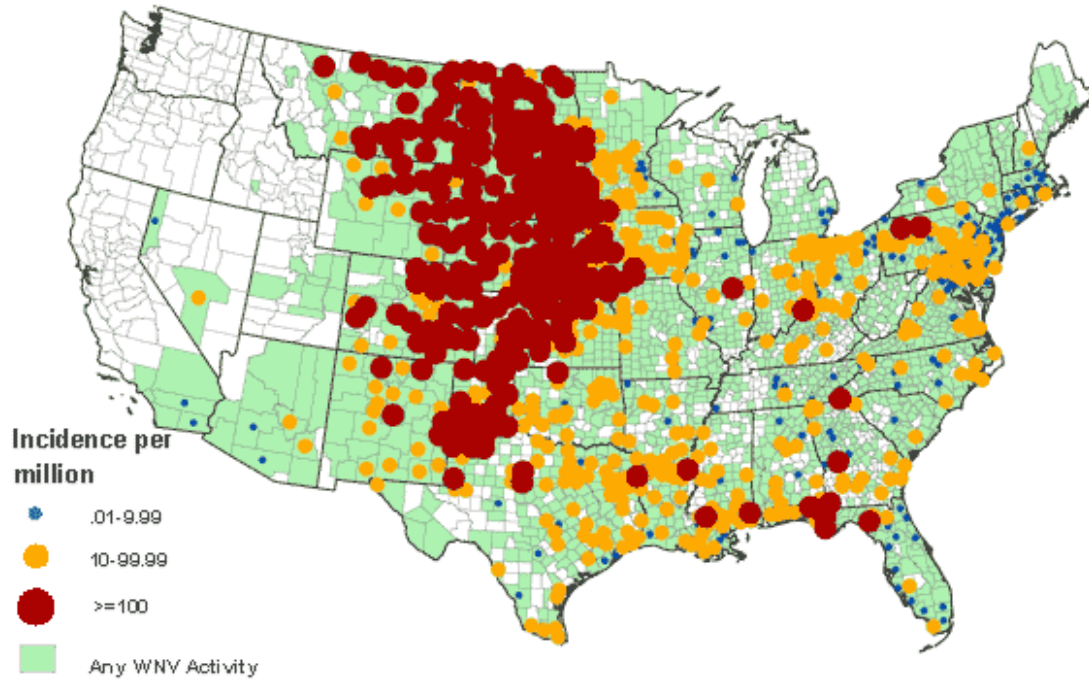
West Nile virus maps reflect surveillance reports released by state and local health departments to CDC's ArboNET system for public distribution. Map shows the distribution of human neuroinvasive disease (encephalitis and/or meningitis) incidence occurring during 2002 with number of human cases shaded according to incidences ranging from .01 to 9.99, 10 to 99.99, greater than 100, and WNV activity (human, mosquito, veterinary, avian and sentinel data).

Maps detailing county-level human, mosquito, veterinary, avian and sentinel data are published each week on the collaborative USGS/CDC West Nile virus web site: <http://diseasemaps.usgs.gov/>

Close Window

## Final 2003 West Nile Virus Human Neuroinvasive Disease Incidence in the United States

This map reflects surveillance findings occurring January 1, 2003 through December 31, 2003 as reported to CDC's ArboNET system for public distribution by state and local health departments.



West Nile virus maps reflect surveillance reports released by state and local health departments to CDC's ArboNET system for public distribution. Map shows the distribution of human neuroinvasive disease (encephalitis and/or meningitis) incidence occurring during 2003 with number of human cases shaded according to incidences ranging from .01 to 9.99, 10 to 99.99, greater than 100, and WNV activity (human, mosquito, veterinary, avian and sentinel data).

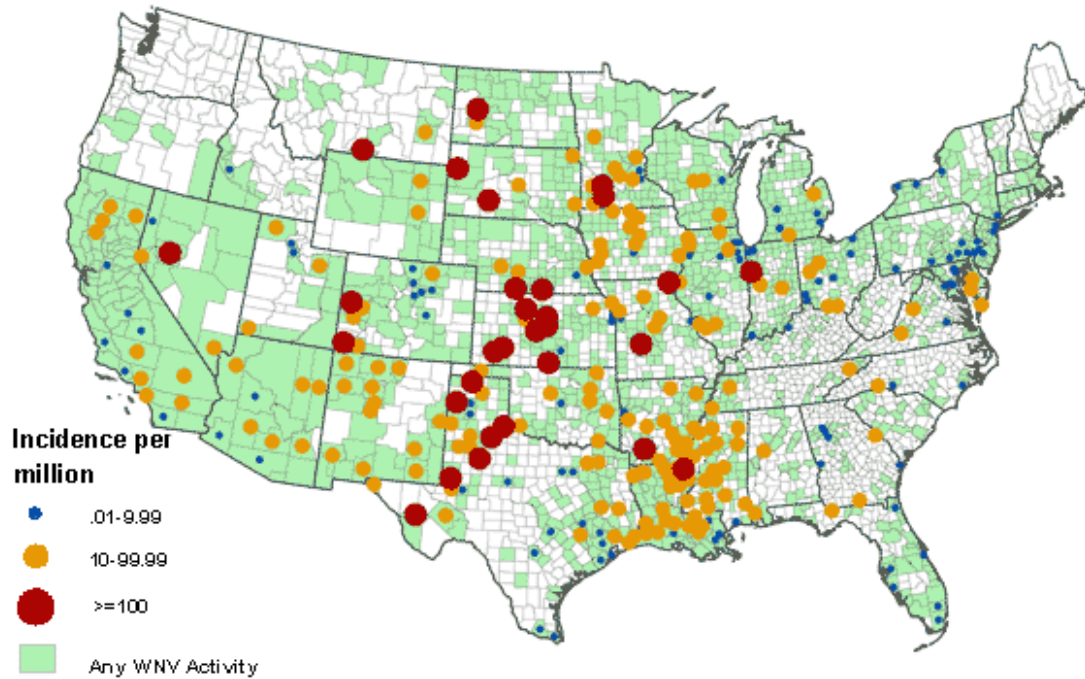
Maps detailing county-level human, mosquito, veterinary, avian and sentinel data are published each week on the collaborative USGS/CDC West Nile virus web site: <http://diseasemaps.usgs.gov/>



Close Window

## Final 2004 West Nile Virus Human Neuroinvasive Disease Incidence in the United States

This map reflects surveillance findings occurring January 1, 2004 through December 31, 2004 as reported to CDC's ArboNET system for public distribution by state and local health departments.



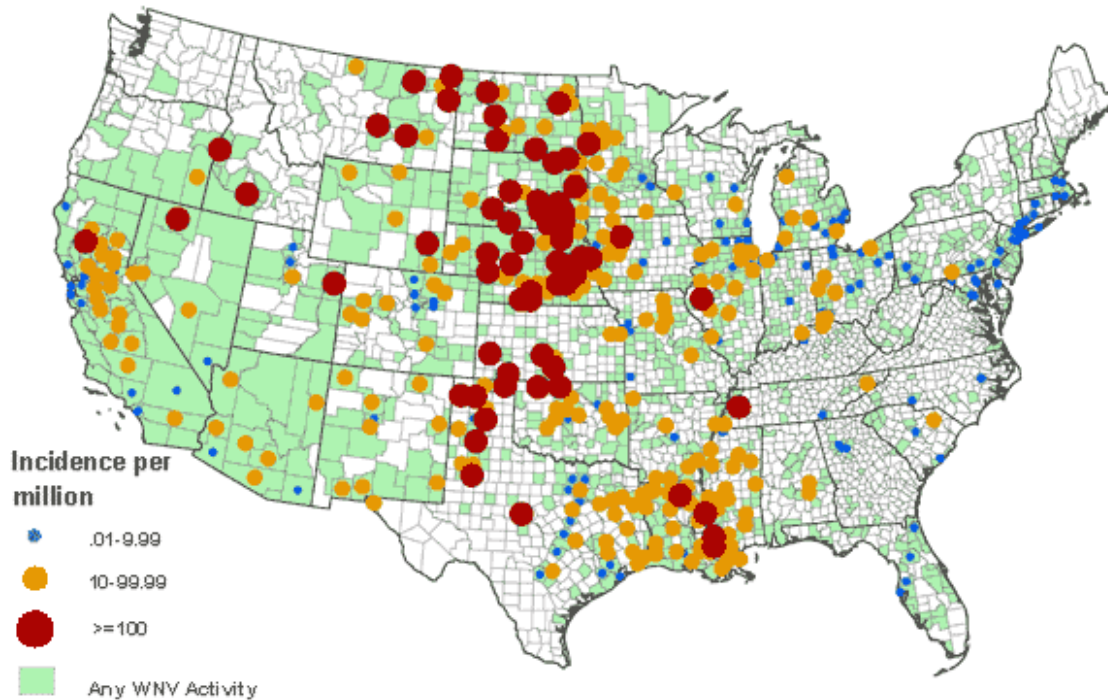
West Nile virus maps reflect surveillance reports released by state and local health departments to CDC's ArboNET system for public distribution. Map shows the distribution of human neuroinvasive disease (encephalitis and/or meningitis) incidence occurring during 2004 with number of human cases shaded according to incidences ranging from .01 to 9.99, 10 to 99.99, greater than 100, and WNV activity (human, mosquito, veterinary, avian and sentinel data).

Maps detailing county-level human, mosquito, veterinary, avian and sentinel data are published each week on the collaborative USGS/CDC West Nile virus web site: <http://diseasemaps.usgs.gov/>

Close Window

## Final 2005 West Nile Virus Human Neuroinvasive Disease Incidence in the United States

This map reflects surveillance findings occurring January 1, 2005 through December 31, 2005 as reported to CDC's ArboNET system for public distribution by state and local health departments.



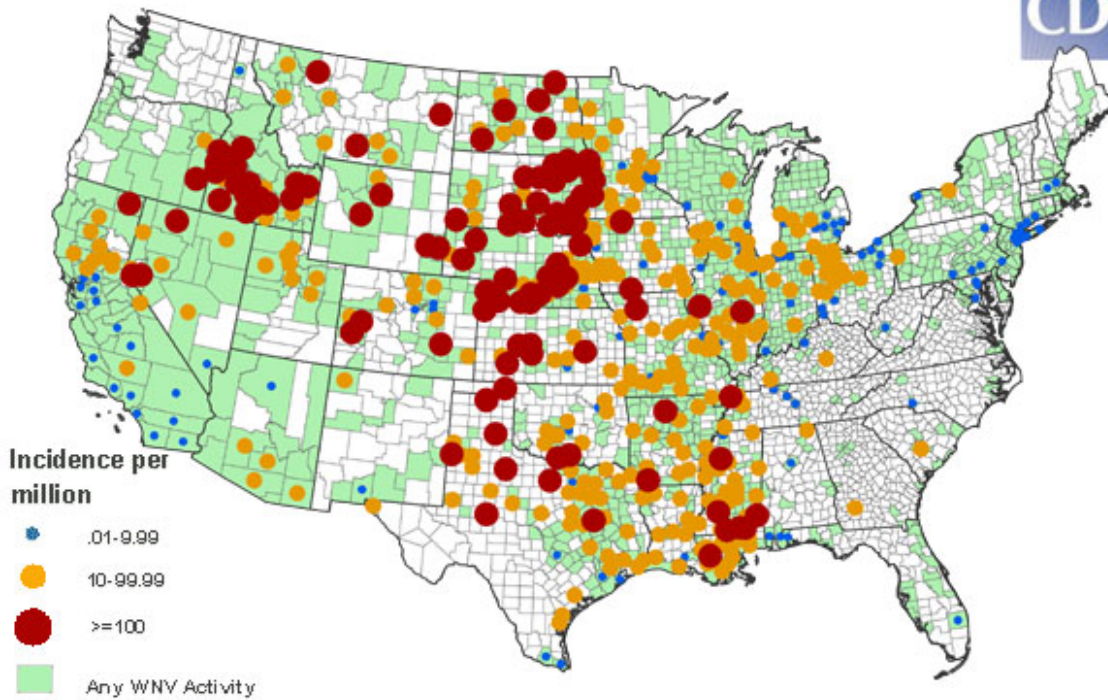
West Nile virus maps reflect surveillance reports released by state and local health departments to CDC's ArboNET system for public distribution. Map shows the distribution of human neuroinvasive disease (encephalitis and/or meningitis) incidence occurring during 2005 with number of human cases shaded according to incidences ranging from .01 to 9.99, 10 to 99.99, greater than 100, and WNV activity (human, mosquito, veterinary, avian and sentinel data).

Maps detailing county-level human, mosquito, veterinary, avian and sentinel data are published each week on the collaborative USGS/CDC West Nile virus web site: <http://diseasemaps.usgs.gov/>

Close Window

## Final 2006 West Nile Virus Human Neuroinvasive Disease Incidence in the United States

This map reflects surveillance findings occurring January 1, 2006 through December 31, 2006 as reported to CDC's ArboNET system for public distribution by state and local health departments.



West Nile virus maps reflect surveillance reports released by state and local health departments to CDC's ArboNET system for public distribution. Map shows the distribution of human neuroinvasive disease (encephalitis and/or meningitis) incidence occurring during 2006 with number of human cases shaded according to incidences ranging from .01 to 9.99, 10 to 99.99, greater than 100 per million population, and WNV activity (human, mosquito, veterinary, avian and sentinel data).

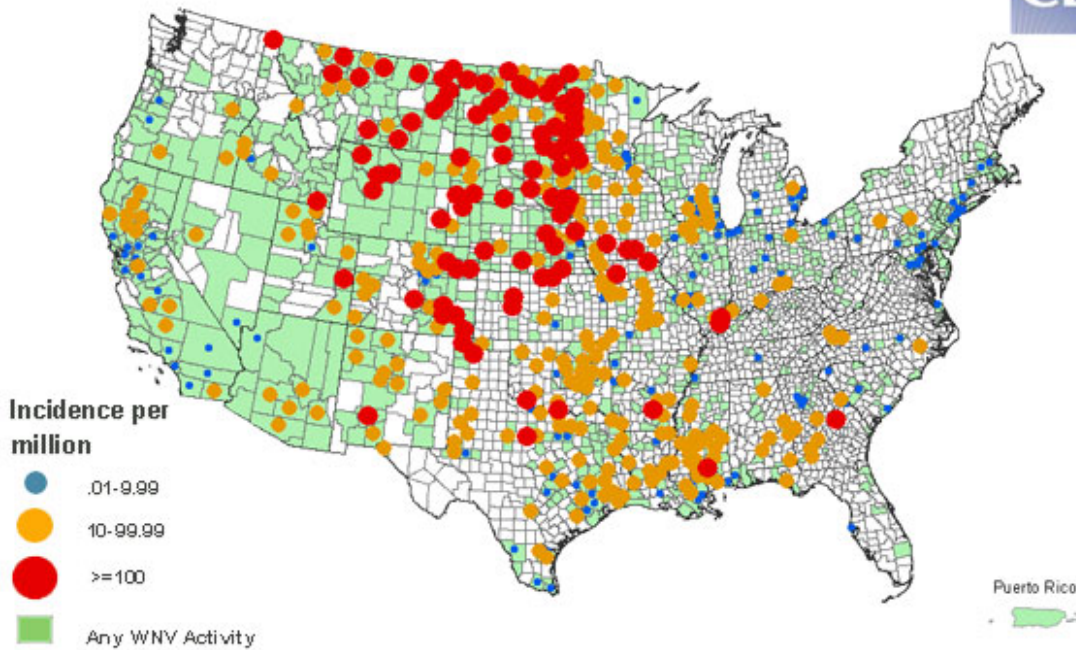
**USGS:** <http://diseasemaps.usgs.gov/>



Close Window

## Final 2007 West Nile Virus Human Neuroinvasive Disease Incidence in the United States

This map reflects surveillance findings occurring January 1, 2007 through December 31, 2007 as reported to CDC's ArboNET system for public distribution by state and local health departments.



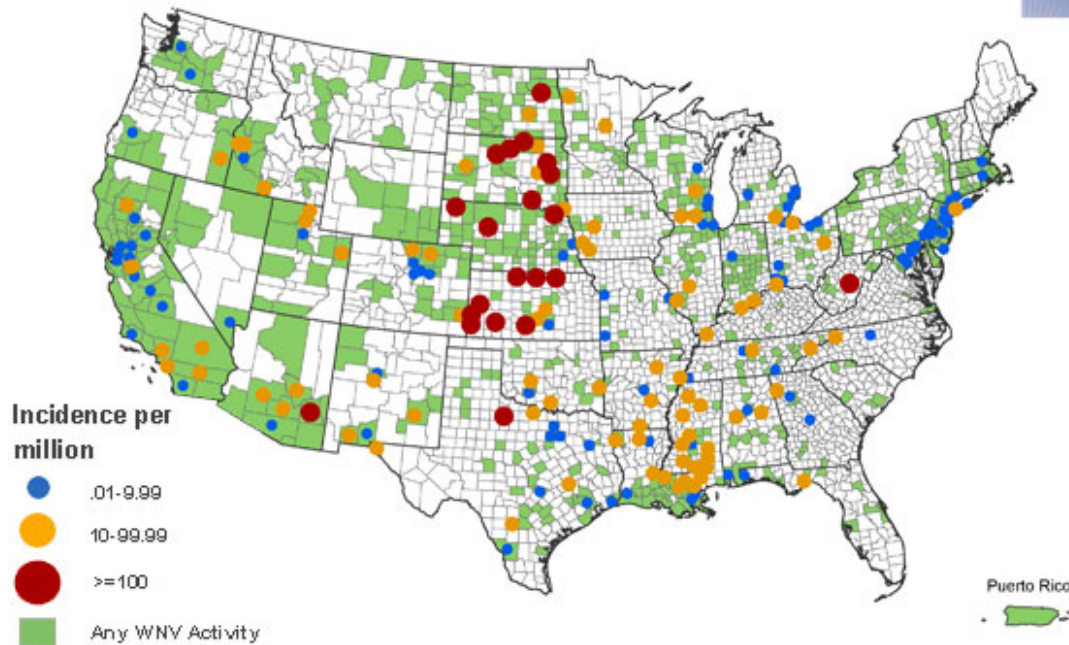
West Nile virus maps reflect surveillance reports released by state and local health departments to CDC's ArboNET system for public distribution. Map shows the distribution of human neuroinvasive disease (encephalitis and/or meningitis) incidence occurring during 2007 with number of human cases shaded according to incidences ranging from .01 to 9.99, 10 to 99.99, greater than 100 per million population, and WNV activity (human, mosquito, veterinary, avian and sentinel data).

**USGS:** <http://diseasemaps.usgs.gov/>

Close Window

## Final 2008 West Nile Virus Human Neuroinvasive Disease Incidence in the United States

This map reflects surveillance findings occurring January 1, 2008 through December 31, 2008 as reported to CDC's ArboNET system for public distribution by state and local health departments.



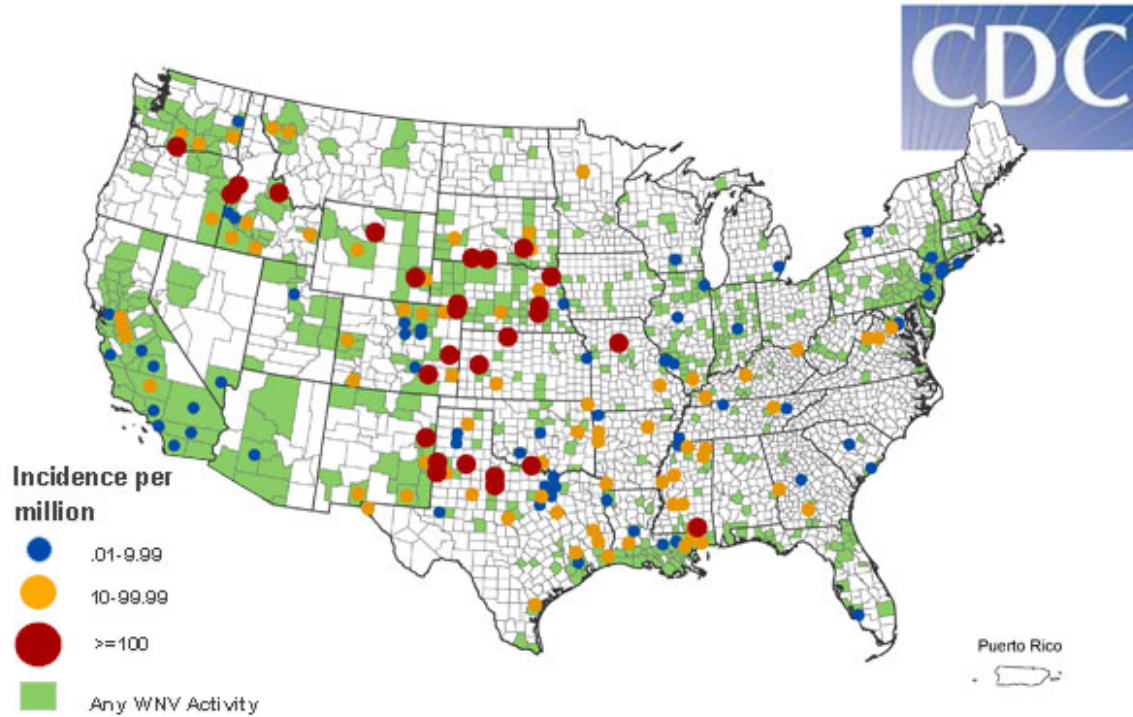
West Nile virus maps reflect surveillance reports released by state and local health departments to CDC's ArboNET system for public distribution. Map shows the distribution of human neuroinvasive disease (encephalitis and/or meningitis) incidence occurring during 2008 with number of human cases shaded according to incidences ranging from .01 to 9.99, 10 to 99.99, greater than 100 per million population, and WNV activity (human, mosquito, veterinary, avian and sentinel data).

**USGS:** <http://diseasemaps.usgs.gov/>

Close Window

## Final 2009 West Nile Virus Human Neuroinvasive Disease Incidence in the United States

This map reflects surveillance findings occurring between January 1, 2009 through December 31, 2009 as reported to CDC's ArboNET system for public distribution by state and local health departments.



West Nile virus maps reflect surveillance reports released by state and local health departments to CDC's ArboNET system for public distribution. Map shows the distribution of human neuroinvasive disease (encephalitis and/or meningitis) incidence occurring during 2009 with number of human cases shaded according to incidences ranging from .01 to 9.99, 10 to 99.99, greater than 100 per million population, and WNV activity (human, mosquito, veterinary, avian and sentinel data).

**USGS:** <http://diseasemaps.usgs.gov/>